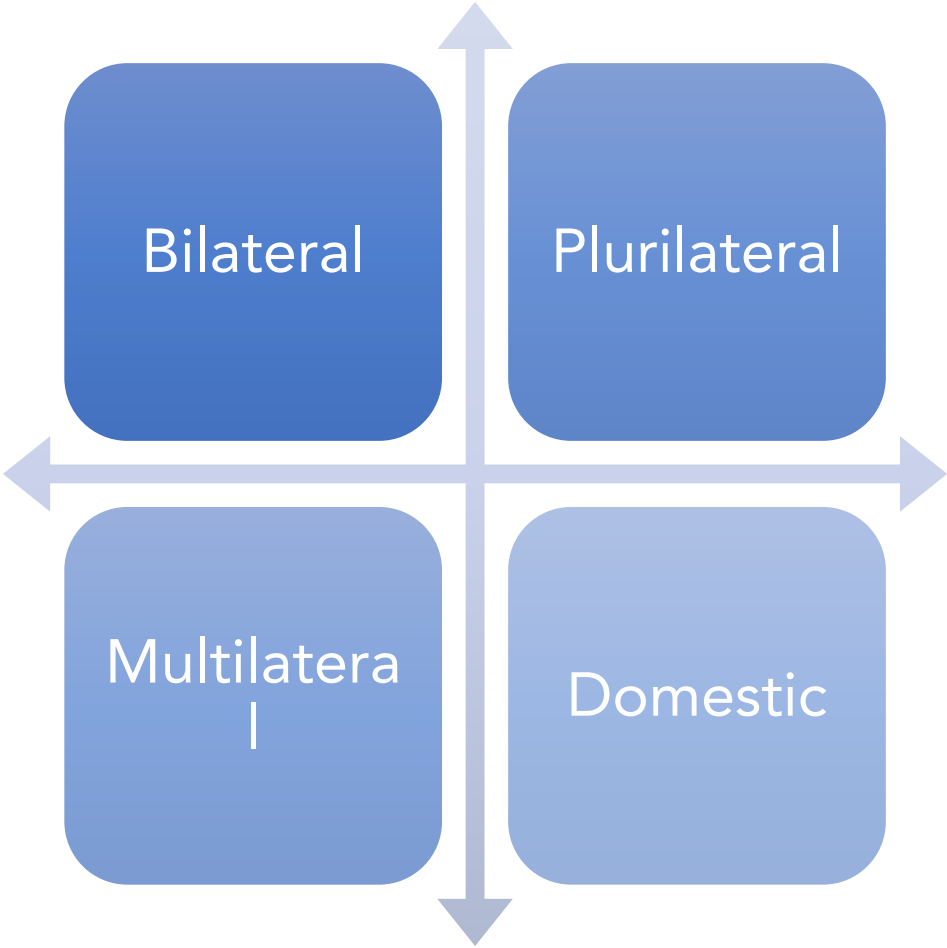
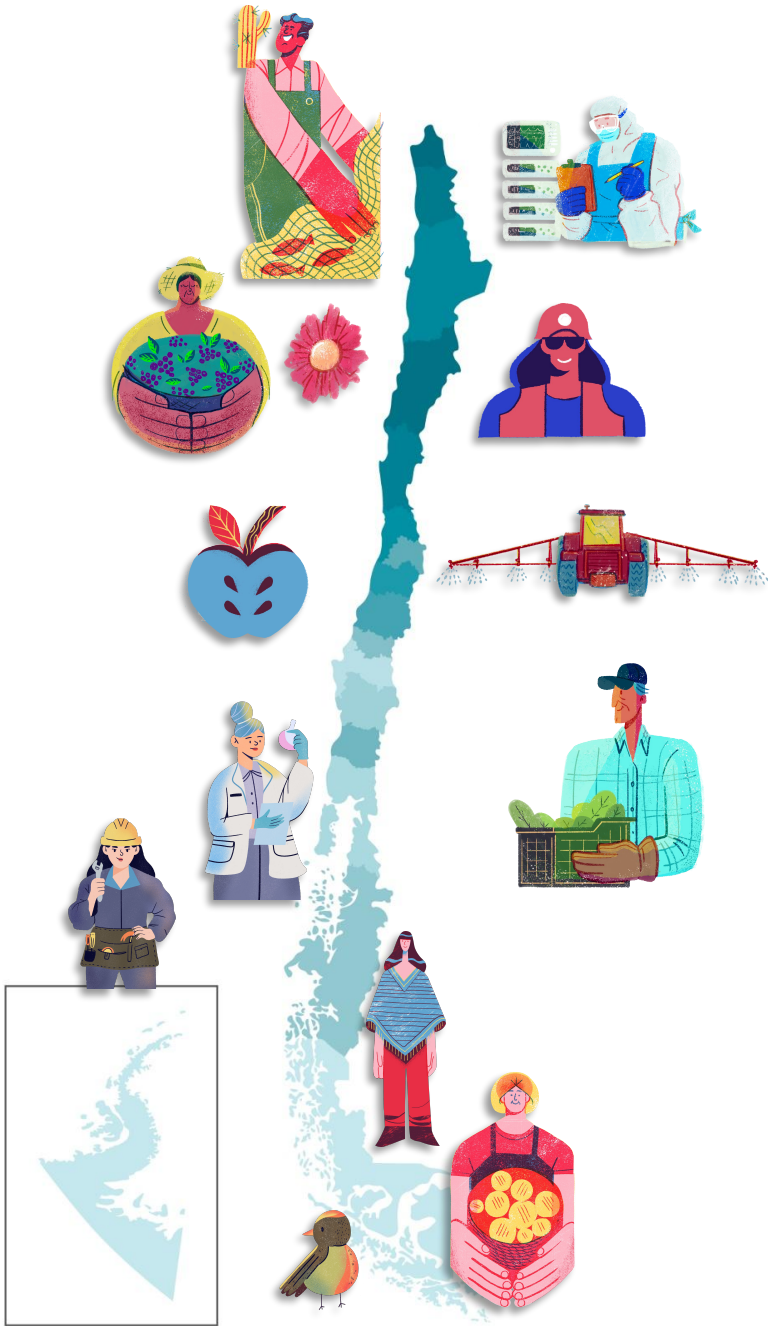




Improving Gender-disaggregated data: 6th Radiography of Women in Trade

Chile and Inclusive Trade



6th Radiography of The Female Exporter

- Provides evidence through disaggregated data on female participation in foreign trade



Exporting companies leadership



Economic sector



Products



Geographical región

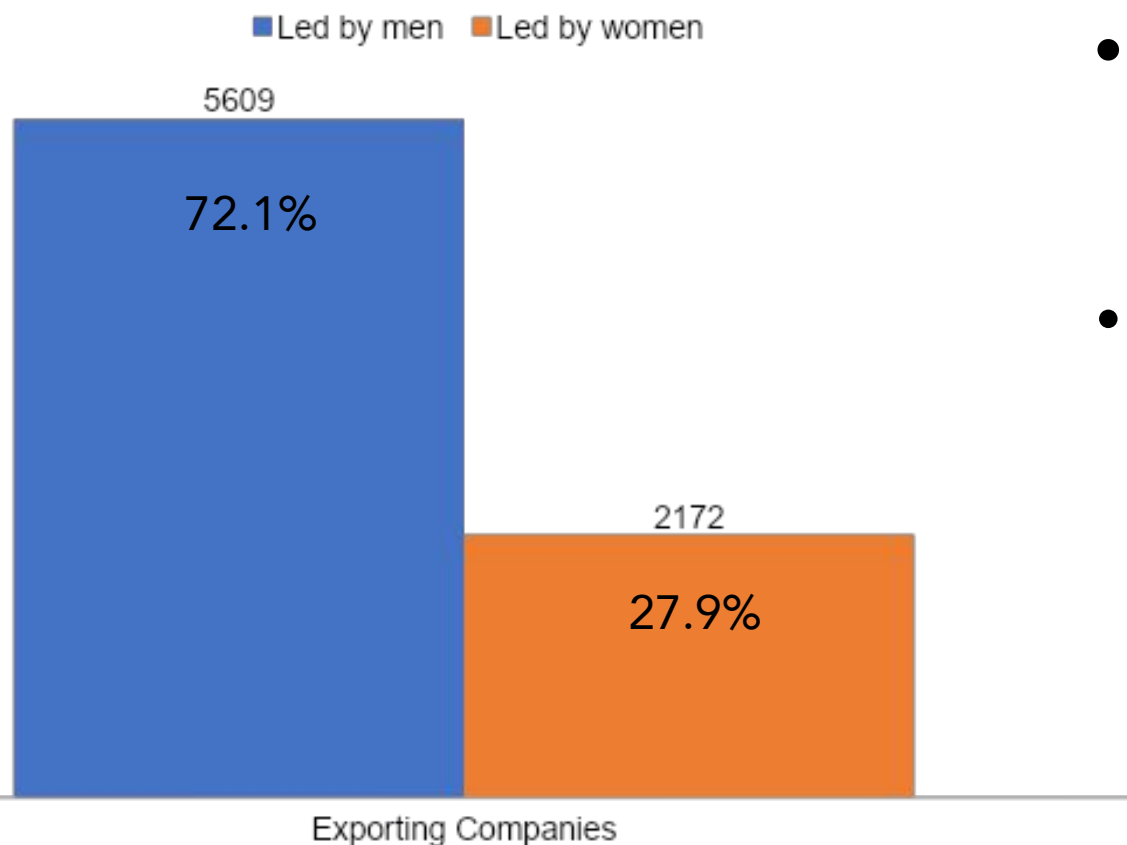


Destination

6th Radiography of The Female Exporter

Main results

Exporting Companies by gender leadership

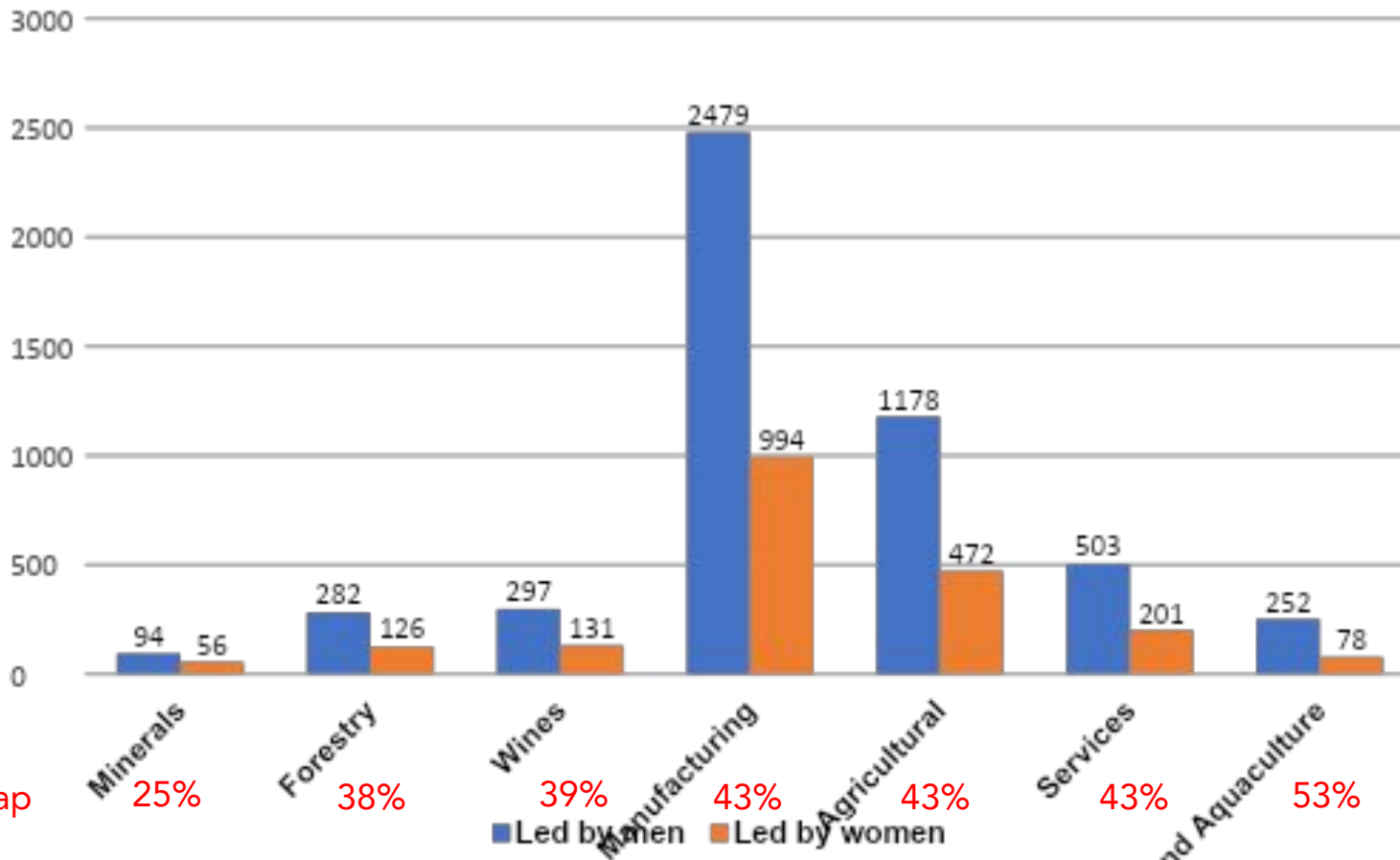


- Only 27.9% of exporting companies are led by women, with a gender gap that stands at 44.17%.
- However, 37.5% of the country's export value is generated by companies led by women:
 - USD 16,102 million in 2022.
 - 170 destinations

6th Radiography of The Female

Exporter Main results

Exporting companies by economic sector



- There is a significant gap in the magnitude of participation between women and men, averaging 41.9% across various economic sectors.
- This means that women participate in exports within the same sectors as companies led by men, but to a much lesser extent.

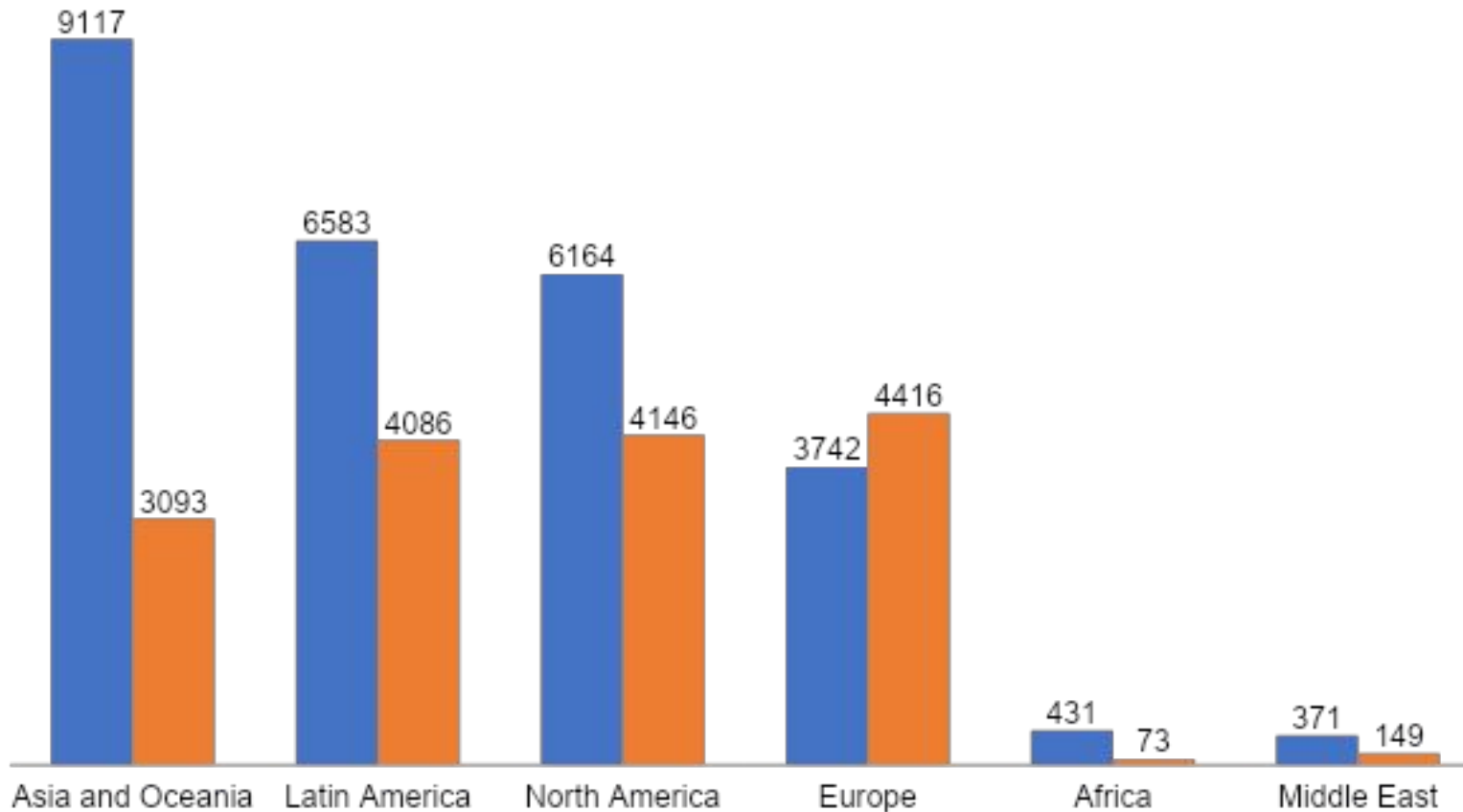


6th Radiography of The Female Exporter

Main results

Gender gap by destination continent (in US million)

■ Companies led by men ■ Companies led by Women



- Out of 195 export destinations economies, the value of shipments from companies led by women is higher than the returns of companies led by men in only 40 of them.
- There is a positive relationship in the trade relations of companies led by women from countries with a favorable policy for their inclusion in trade.

6th Radiography of The Female Exporter

Main conclusions

01

There is empirical evidence that much progress still needs to be made in gender equality in this field.

02

Policies aimed at promoting women's participation in foreign trade are important both in the country of export origin and in the destination markets.

03

An effective trade policy must necessarily be integrated with policies for the economic empowerment of women.



Thank You For Your Attention

